

# Responsible gambling signage

## Responsible Gambling Signage required for each Gambling Industry sector

Refer to pages 3-10 to view examples

<b>Responsible Gambling Signage</b>	Casino	Charitable and Non-Profit (excluding Bingo)	Bingo	Hotels	Clubs	Racing	UNiTAB
RGS1 "Where to get help" - posters	✓	<b>x</b>	✓	✓	✓	✓	✓
RGS2 "Where to get help" - takeaway cards	✓	✓ <b>Cat 3 only</b>	✓	✓	✓	✓	✓
RGS3 Information Display Board	<b>3</b>	<b>3(e)</b> <b>Cat 3 only</b>	<b>3(b)</b> <b>Cat 2 only</b>	<b>3</b>	<b>3</b>	<b>3(c)</b> <b>(race books)</b>	<b>3(a)</b>

## WHERE SHOULD SIGNAGE BE LOCATED

<b>RGS1</b> “Where to get help” Signs	See page 3						
	Casino	Charitable and Non-Profit (excluding Bingo)	Bingo	Hotels	Clubs	Racing	UNiTAB Agency
Gaming Area	√	√ Category 3 only	√	√	√	√	√
Where the sale or redemption of gaming tokens takes place	√		√	√	√	√	√
Rest Rooms/discreet location	√			√	√	√	
ATM/EFTPOS facilities	√	√ Category 3 only		√	√	√	
Keno/TAB area	√			√	√		

<b>RGS2</b> “Take away cards”	See page 4						
	Casino	Charitable and Non-Profit (excluding Bingo)	Bingo	Hotels	Clubs	Racing	UNiTAB Agency
Take-away cards must be available at all times for customers from a discreet location. Examples could be: rest rooms, ATM, cashiers cage or next to gaming machines.	√	√	√	√	√	√	√

<b>RGS3</b> “Information Display Board” (If gambling becomes a problem call...) sign	See pages 5 - 10						
	Casino	Charitable and Non-Profit (excluding Bingo)	Bingo	Hotels	Clubs	Racing	UNiTAB Agency
Sign is to be displayed in a prominent position where it is easily visible to customers.	√	√ Category 3 only	√ Category 2 only	√	√	√	√

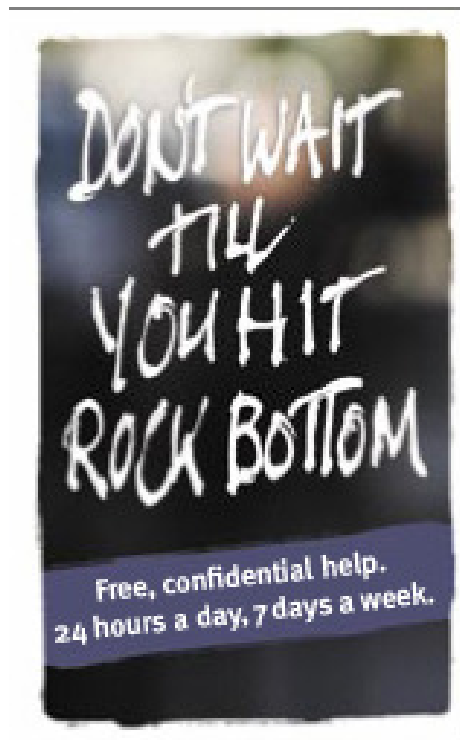
RGS 1

“Where to get help signs”



**RGS 2**

**“Takeaway Cards”**



**RGS 3**

**Information Display Board**

# What are your chances?



## Find out here. Get some useful gambling tips.

**To help you manage your gambling, this venue:**

- Can provide Exclusion (self ban) from this venue when gambling becomes a problem
- Can put you in contact with a Gambling Help service counsellor
- Will not provide credit for gambling under any circumstances
- May refuse to cash any cheques or make cash payouts beyond maximum set limits

**Just ask the management for information regarding:**

- This venue's Responsible Gambling Policy
- A Player Information Guide, including your odds of winning
- Our Financial Transactions Policy
- Our procedures for lodging a gambling related complaint

---

**Please ask a staff member to find out more.**

**People under 18 years of age are prohibited from gambling and from entering any gaming area.**

Free, confidential, 24 hours

gambling  
**help** line

1800 858 858

[www.gamblinghelponline.org.au](http://www.gamblinghelponline.org.au)

 Queensland Government

**RGS 3 (a)**

**Information Display Board – Unitab**

# What are your chances?



## Find out here. Get some useful gambling tips.

**To help you manage your gambling, this venue:**

- Can provide Exclusion (self ban) from this venue when gambling becomes a problem
- Can put you in contact with a Gambling Help service counsellor
- Will not provide credit for gambling under any circumstances
- May refuse to cash any cheques or make cash payouts beyond maximum set limits

**Just ask the management for information regarding:**

- This venue's Responsible Gambling Policy
- A Player Information Guide, including your odds of winning
- Our Financial Transactions Policy
- Our procedures for lodging a gambling related complaint

---

**Please ask a staff member to find out more.**

**People under 18 years of age are prohibited from gambling.**

Free, confidential, 24 hours

gambling  
**help** line  
1800 858 858

[www.gamblinghelponline.org.au](http://www.gamblinghelponline.org.au)



**RGS 3 (b)**

Information Display Board – category 2 bingo

# What are your chances?



**Find out here. Get some useful gambling tips.**

**To help you manage your gambling, this venue:**

- Can provide Exclusion (self ban) from this venue when gambling becomes a problem
- Can put you in contact with a Gambling Help service counsellor
- Will not provide credit for gambling under any circumstances
- May refuse to cash any cheques or make cash payouts beyond maximum set limits

**Just ask the management for information regarding:**

- This venue's Responsible Gambling Policy
- A Player Information Guide, including your odds of winning
- Our Financial Transactions Policy
- Our procedures for lodging a gambling related complaint

---

**Please ask a staff member to find out more.**

Free, confidential, 24 hours

gambling  
**help** line

**1800 858 858**

[www.gamblinghelponline.org.au](http://www.gamblinghelponline.org.au)

 Queensland Government

**RGS 3 (c)**

**Information Display Board - Racing**

# What are your chances?



## Find out here. Get some useful gambling tips.

**To help you manage your gambling, this venue:**

- Can provide Exclusion (self ban) from this venue when gambling becomes a problem
- Can put you in contact with a Gambling Help service counsellor
- Will not provide credit for gambling under any circumstances
- May refuse to cash any cheques or make cash payouts beyond maximum set limits

**Just ask the management for information regarding:**

- This venue's Responsible Gambling Policy
- A Player Information Guide, including your odds of winning
- Our Financial Transactions Policy
- Our procedures for lodging a gambling related complaint

---

**Please ask a staff member to find out more.**

**People under 18 years of age are prohibited from gambling and from entering any gaming area.**

Free, confidential, 24 hours

gambling  
**help**line

1800 858 858

[www.gamblinghelponline.org.au](http://www.gamblinghelponline.org.au)



**RGS 3 (e)**

Information Display Board – category 3 CN & P only

# What are your chances?



**Find out here. Get some useful gambling tips.**

**To help you manage your gambling, this venue:**

- Can provide Exclusion (self ban) from this venue when gambling becomes a problem
- Can put you in contact with a Gambling Help service counsellor
- Will not provide credit for gambling under any circumstances
- May refuse to cash any cheques or make cash payouts beyond maximum set limits

**Just ask the management for information regarding:**

- This venue's Responsible Gambling Policy
- A Player Information Guide, including your odds of winning
- Our Financial Transactions Policy
- Our procedures for lodging a gambling related complaint

---

**Please ask a staff member to find out more.**

Free, confidential, 24 hours

gambling  
**help** line  
1800 858 858

[www.gamblinghelponline.org.au](http://www.gamblinghelponline.org.au)

